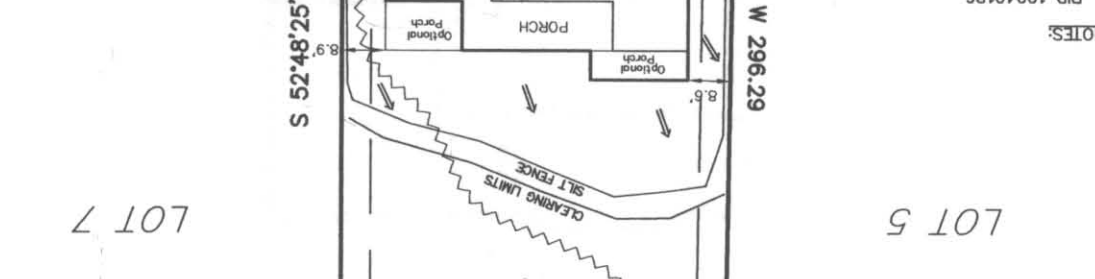
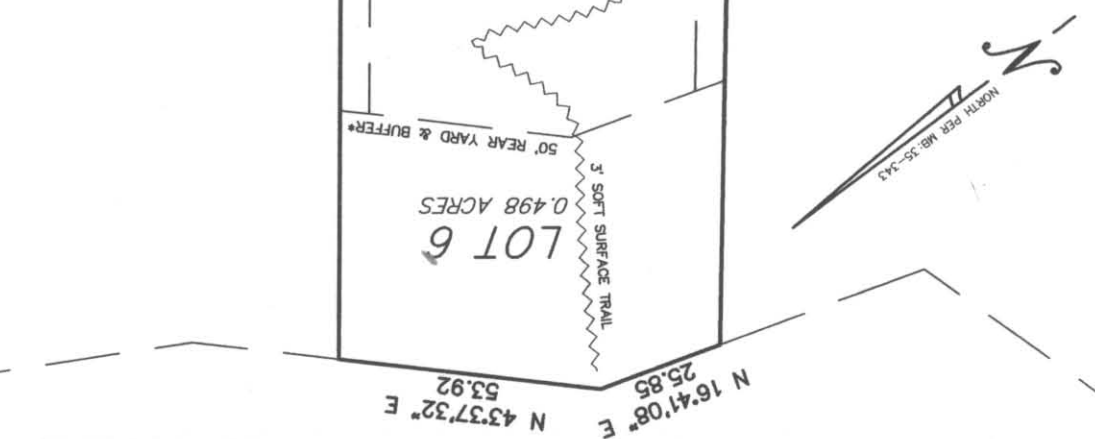


THIS IS TO CERTIFY THAT ON THE 14TH DAY OF NOVEMBER, 2007, AN ACTUAL SURVEY WAS MADE UNDER MY SUPERVISION OF THE PROPERTY SHOWN ON THIS PLAN, AND THAT THE BOUNDARY LINES AND THE IMPROVEMENTS, IF ANY, ARE AS SHOWN HEREON.

LAKE WYLIE SIGNED PROFESSIONAL LAND SURVEYOR



- NOTES:
1. PID 19940186
 2. THIS PROPERTY IS "GRANDFATHERED" FROM WATERSHED REGULATIONS. NO IMPERVIOUS AREA WILL APPLY.
 3. THIS SITE PLAN IS PROVIDED WITHOUT THE BENEFIT OF FIELDWORK.
 4. *The buffer is to remain undisturbed; however, small trees and underbrush less than 2 inches in caliper (measured six (6) inches above the ground) may be removed to enhance views. Also, dead or diseased trees may be removed from the buffer. In addition, previous pathways can be constructed through the buffer to allow access to the lakeshore. For approval to construct these pathways or to remove unhealthy trees, contact the Mecklenburg County Water Quality Program at (704) 336-5500.

MB:35 PG.343
 DRAWN BY: DH
 LDD 1999.SAW MILL
 SCALE 1"=30'

CAROLINA SURVEYORS, INC
 P.O. BOX 267
 PINEVILLE, N.C. 28134
 (704) 889-7601
 FAX:(704) 889-7614

LOT 6, SAW MILL RD. MAP 1
 CHARLOTTE, MECKLENBURG CO. NORTH CAROLINA
 MASTERCRAFT DEVELOPMENT, LLC.

SURVEYED FOR